

WESTSIDE HIGH SCHOOL RENOVATIONS & ADDITION

BOE Meeting

**DD Approval: Cafeteria
Addition + Locker Rooms**

APRIL 22, 2024



Westside
Community Schools



PROJECT ADVOCATES
Your Project. Our Passion.

BVHARCHITECTURE



morrissey
engineering inc

TD2
engineering
& surveying

LAMP
RYNEARSON

- 
- 01 Cafeteria Exterior Design Development
 - 02 Cafeteria Interior Design Development
 - 03 Locker Room Design Development
 - 04 Next Steps

01

Cafeteria Exterior Design Development

Exterior Materials

COLOR OPTIONS



GLAZING W/
FRITTED PATTERN



COMPOSITE PANEL -
CUSTOM COLORS



PRECAST CONCRETE
PANEL



Site Plan





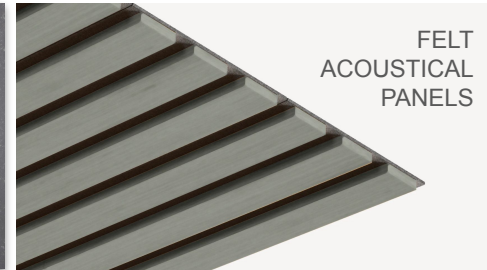
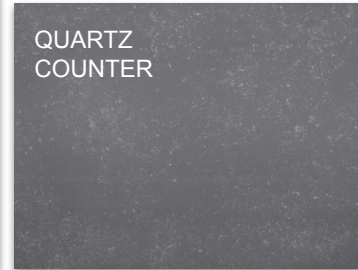
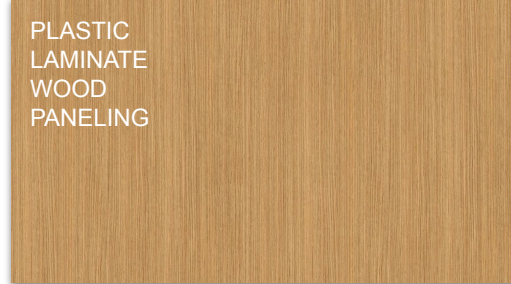
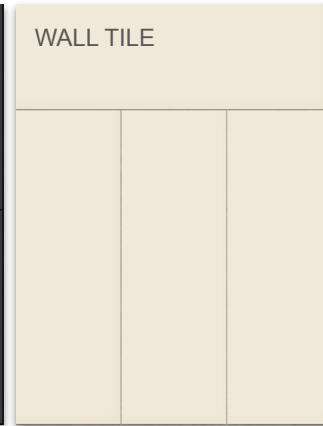
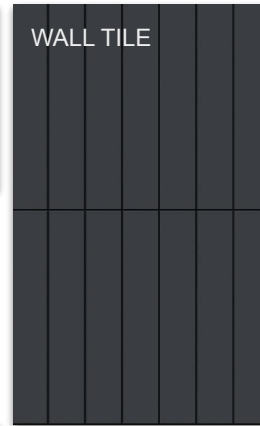
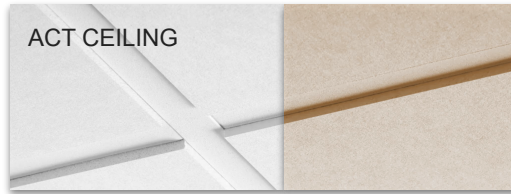
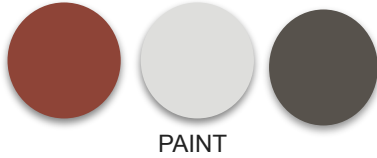


WESTSIDE HIGH SCHOOL



Cafeteria Interior Design Development

Interior Materials



Floor Plan



ENTRY

CONCESSION



CAFE

CAFE

CONCESSION



TOWARDS SERVERY



SERVERY ENTRY





DINING AREA LOOKING SOUTH

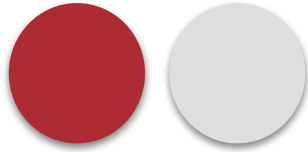


DINING AREA LOOKING NORTH

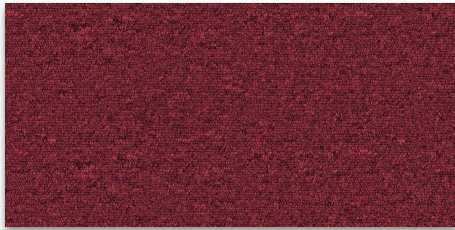
Locker Rooms

Interior Materials

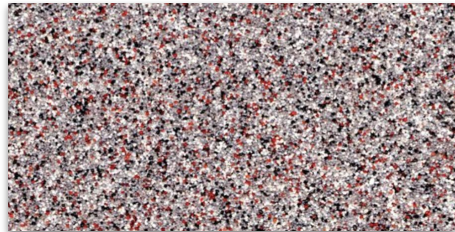
LOCKER ROOMS



PAINT



OFFICE & PLANNING CARPET



EPOXY FLOORING & BASE

GIRLS / COACHES SINK



QUARTZ
COUNTER



PLASTIC
LAMINATE



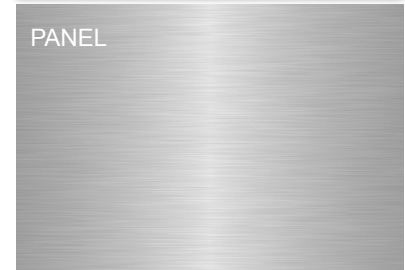
BOYS SINK



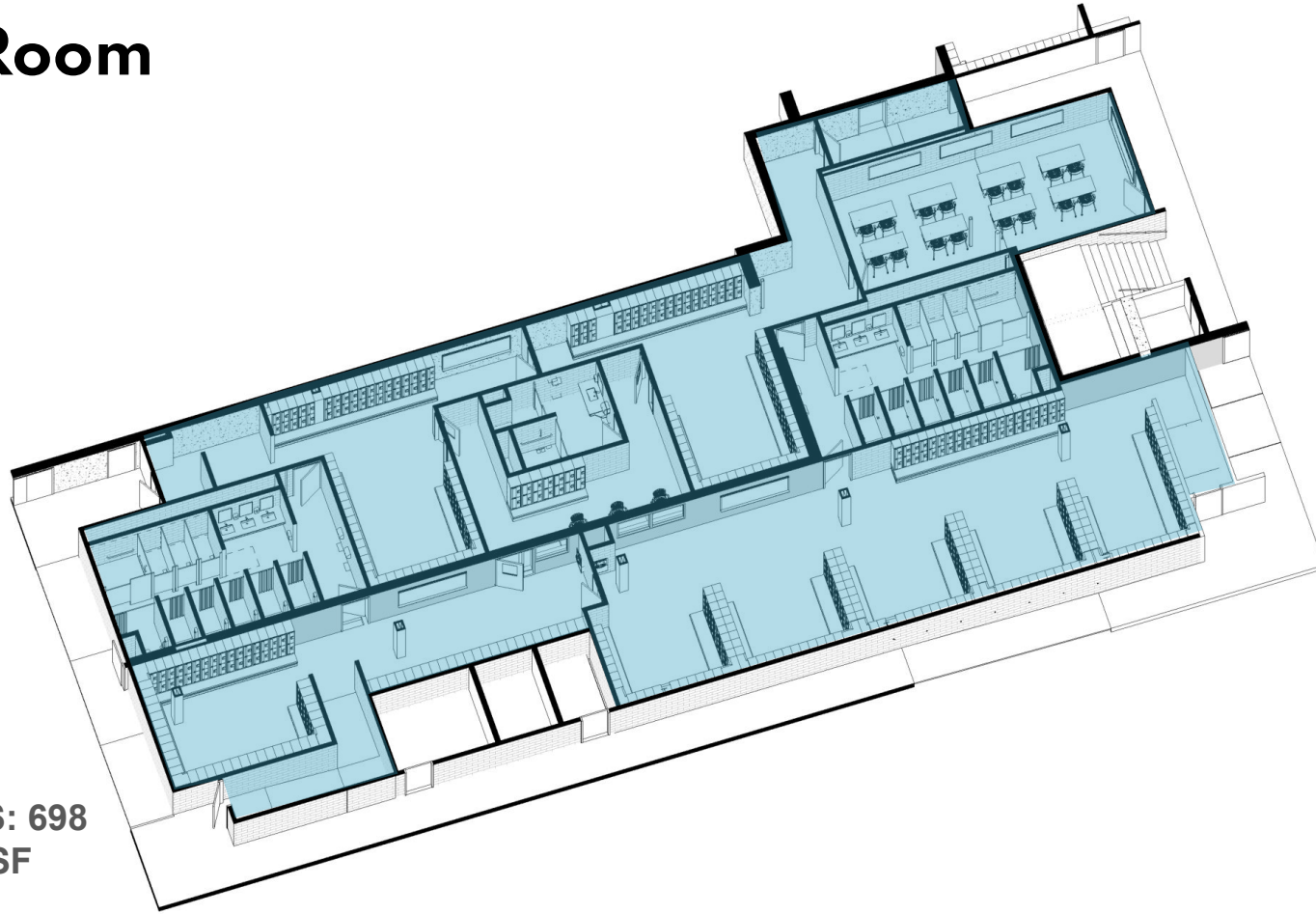
COUNTER



PANEL

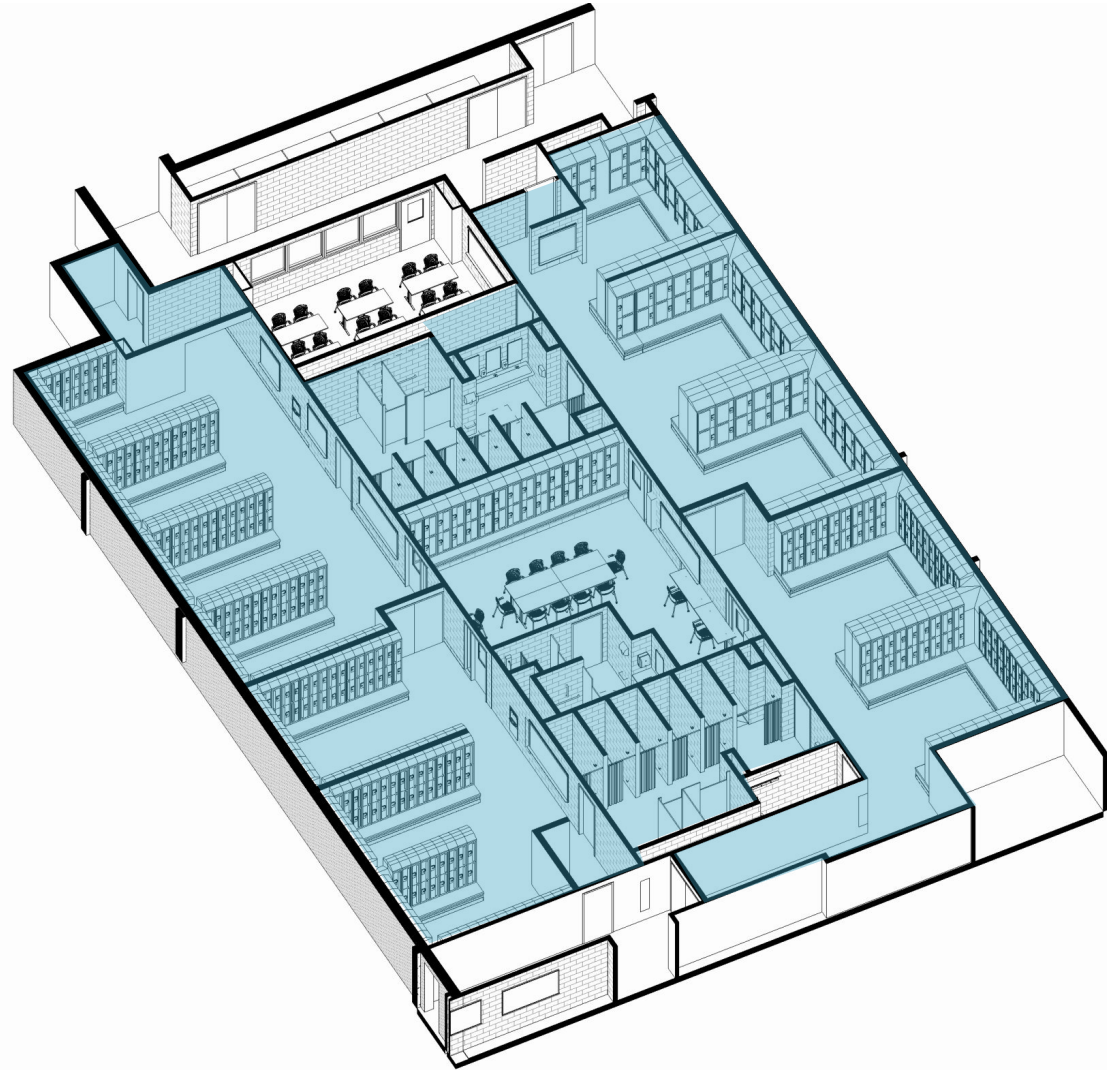


Girls Locker Room



TOTAL LOCKER SPACES: 698
TOTAL GIRLS SF: 5,495 SF

Boys Locker Room



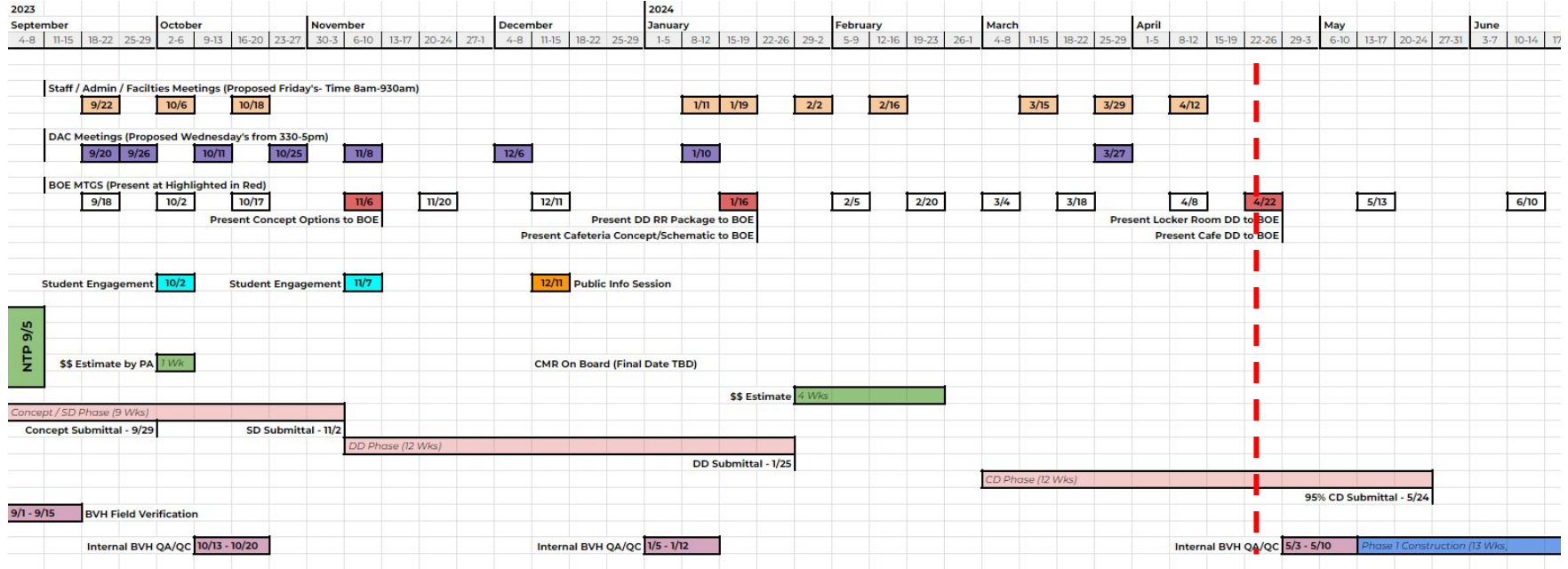
TOTAL LOCKER SPACES: 698
TOTAL BOYS SF: 5,495 SF

Next Steps

Next Steps:

- *BVH is working towards late May to have 95% CD's completed*
 - *Project will go on hold until Spring 2025 when the CMR selection process begins*

Design Phase Schedule:



Thank you!